



**TRANSPORTATION CABINET**

Frankfort, Kentucky 40622  
www.transportation.ky.gov/

**Steven L. Beshear**  
Governor

**Michael W. Hancock, P.E.**  
Secretary

April 25, 2011

CALL NO. 338  
CONTRACT ID NO. 112925  
Addendum # 1

Subject: Daviess County, FE02 030 0081 B00053N  
Letting April 29, 2011

- (1) Revised - Special Note - Page 7 of 78
- (2) Revised - Special Note - Page 10 of 78
- (3) ADDED - Detail Drawings - Pages 26(a) & 26(b) of 78

Proposal revisions are available at <http://transportation.ky.gov/contract/>.

Plan revisions are available at <HTTP://WWW.LYNNIMAGING.COM/KYTRANSPORTATION/>

If you have any questions, please contact us at (502) 564-3500.

Sincerely,

A handwritten signature in blue ink that reads "Ryan Griffith".

Ryan Griffith  
Director  
Division of Construction Procurement

RG:jj

Enclosures



An Equal Opportunity Employer M/F/D

## **SPECIAL NOTE FOR BRIDGE RESTORATION AND WATERPROOFING WITH CONCRETE OVERLAYS**

- I. DESCRIPTION.** Perform all work in accordance with the Kentucky Transportation Cabinet, Department of Highway's 2008 Standard Specifications for Road and Bridge Construction and applicable Supplemental Specifications, the Standard Drawings, this Note, and the attached detail drawings. Section references are to the Standard Specifications.

This work consists of the following: (1) Furnish all labor, materials, tools, and equipment; (2) Machine prep the existing slab; (3) Complete partial depth repairs and place new concrete overlay and epoxy-sand slurry in accordance with Section 606; (4) Repair/replace damaged and corroded reinforcing bars; (5) complete rigid approach and joint replacements; (6) Maintain and control traffic; and (7) Any other work specified as part of this contract.

All construction will be in accordance with Section 606 unless otherwise specified.

**II. MATERIALS.**

- A. Latex Concrete.** See Section 606.03.17.  
**B. Class "M" Concrete.** Use either "M1" or "M2". See Section 601.  
**C. Epoxy-Sand Slurry.** See Section 606.03.10.

**III. CONSTRUCTION.**

- A. Machine prep of existing slab.** Remove concrete from existing slab to a depth of at least 1/4" below the existing surface, and remove all patches completely, in accordance with the requirements of Section 606.03.03. See Special Note for Use of Hydrodemolition Method.
- B. Partial Depth Slab Repair.** Remove areas determined to be unsound by the Engineer via Hydrodemolition or via hand held jackhammers weighing less than 40lbs. No wrecking balls, drop hammers, or rig-mounted breakers are allowed. Repair/Replace all damaged or severely corroded reinforcing bars prior to partial depth repair operation. The Department will not measure material removal and will consider this work incidental to the bid item "PARTIAL DEPTH PATCHING".
- C. Rigid Approach Repair.** Completely remove existing concrete slab a consistent width of 3'-0" from edge of bridge end wall. Rig-mounted breakers may be used for the removal of the rigid approach only. Drill and epoxy #4 reinforcing bars 12" deep into the existing rigid approach every 12" on center. Reinforcing bars shall be 42" long each. A 1/8" neoprene pad shall be installed on the vertical and horizontal areas of the existing abutment. New concrete rigid approach shall be Class "M" concrete and shall be **poured separately from** the new armored edge and new expansion joint. Dispose of all removed material away from the site.
- E. Surface Texturing.** Texture the concrete surface of the overlay in accordance with Section 609.03.10.

Section 511. The interfaces of the new and old concrete shall be as nearly vertical and horizontal as possible.

- C. Concrete Median.** The existing concrete median shall be removed 1'-3" on the approach side of the joints and 1'-6" on the deck side of the joints (same limits as joint replacement). Median shall be replaced with Class "M" concrete leaving 4" opening for neoprene seal to extend. No armored edges are required in the new concrete median. New neoprene strip seal may be cut at the center of the median to allow the strip seal to be elevated to the top of the curb. This work shall be incidental to the pay item "EXPAN JOINT REPLACE 4 IN"
- D. Additional Steel Reinforcement.** Furnish for replacement, as directed by the Engineer, 1000 linear feet of steel reinforcing bars ½" diameter by 20' lengths. Place these bars in areas deemed by the Engineer to require additional reinforcement. Field cutting and bending is permitted. Do not place any additional steel reinforcement above the height of the top row of Nelson Studs on the armored edges. Ensure that all exposed steel reinforcement is tied in accordance with Section 602.03.04 prior to pouring the new Class "M" concrete. Deliver unused bars to the Local County Maintenance Barn. Payment will be made in accordance with Section 602.
- E. Stage Construction.** Installation of concrete and armored edges in two (or more if specified) stages is necessary. Join the armored edges at or near the centerline of the roadway or lane line, field weld and grind smooth.
- F. Preformed Neoprene Strip Seal.** Place the preformed strip seal in one continuous, unbroken length. Place neoprene strip seals as recommended by the manufacturer and in accordance with Section 609.03.04 (D). Place neoprene strip seals as recommended by the manufacturer and in accordance with Section 609.03.04 (E), except that shop drawings will not be required.
- G. Shop Plans.** Shop plans will not be required. The Contractor is responsible for obtaining field measurements and supplying properly sized materials to complete the work.

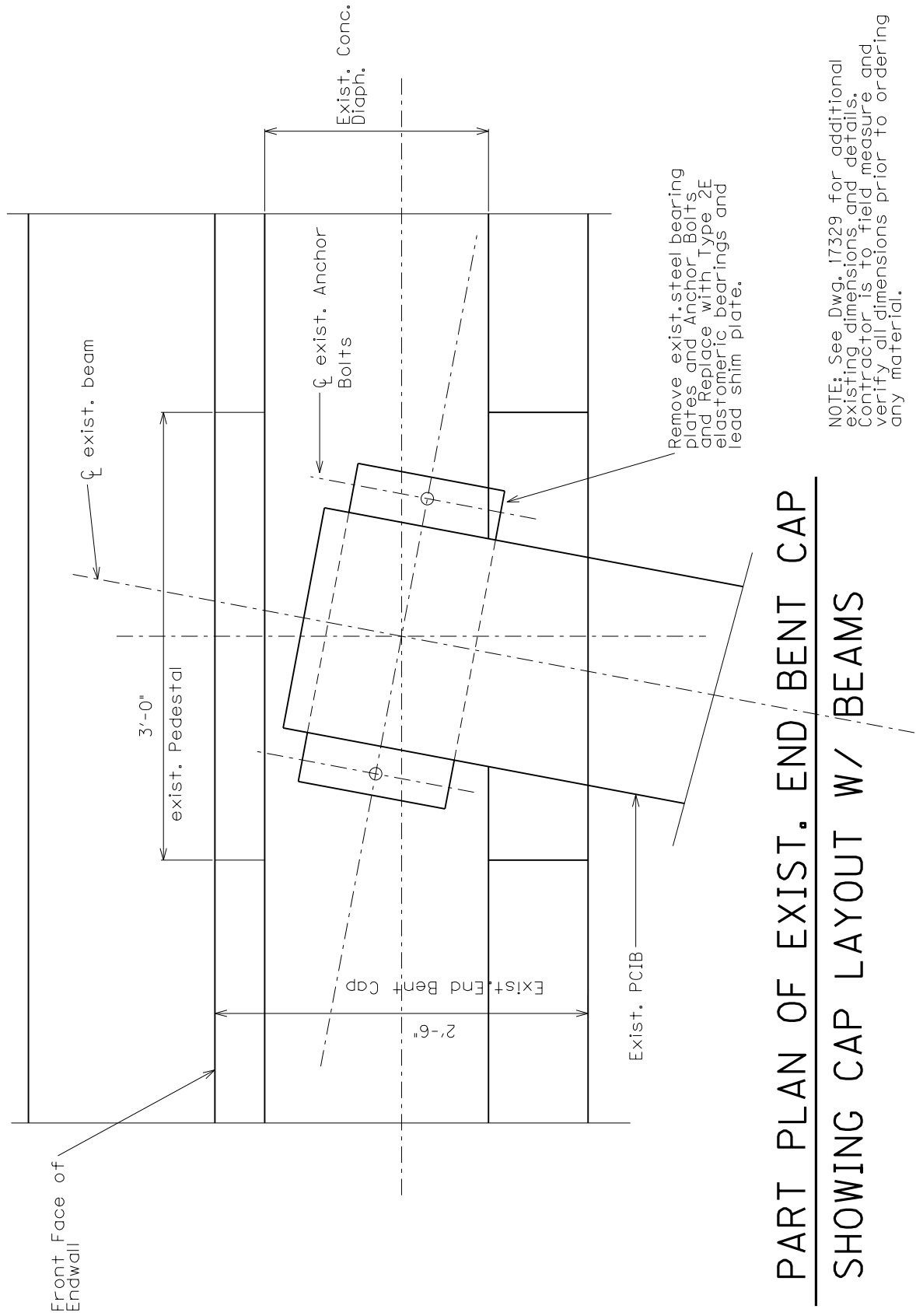
#### IV MEASUREMENT.

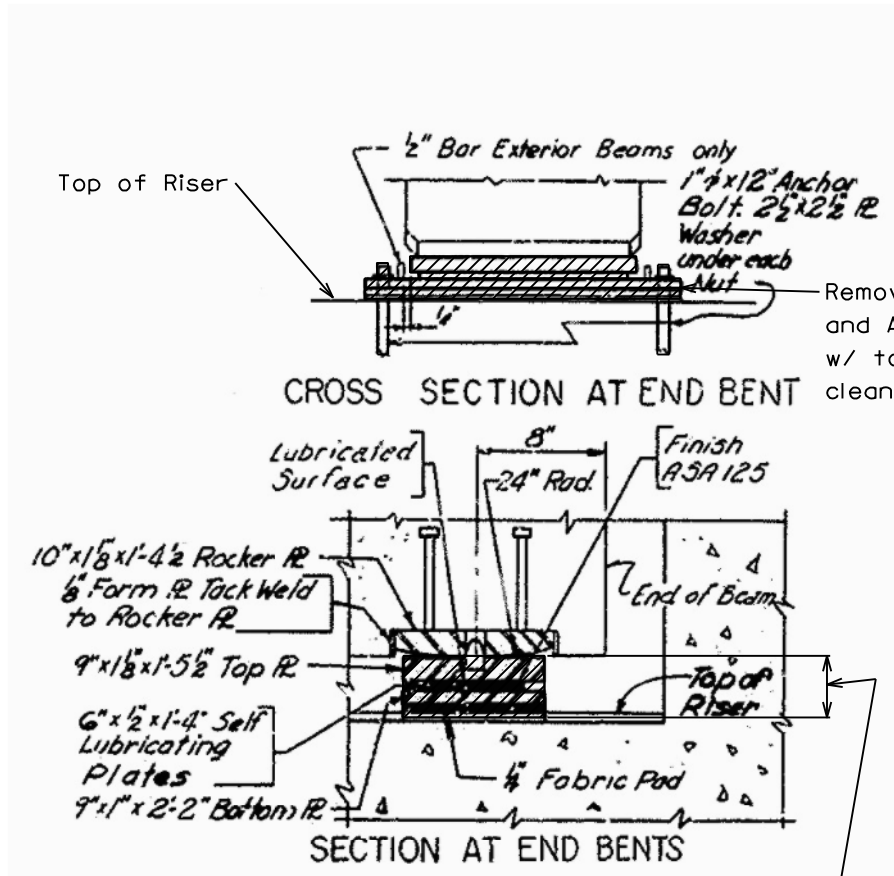
- A. Expansion Joint Replacement – 4".** The Department will measure the quantity in linear feet from gutterline to gutterline along the centerline of the joint.
- B. Armored Edge for Concrete.** The Department will measure the quantity in linear feet from gutterline to gutterline along the face of the bridge end.
- C. Steel Reinforcement.** See Section 602.

#### V. PAYMENT.

- A. Expansion Joint Replacement – 4".** Payment at the contract unit price per linear foot is full compensation for removing specified existing materials, furnishing and installing the new armored edges, concrete, neoprene strip seal, and all incidental items necessary to complete the work (except the overlay material) within the specified pay limits as specified by this note and as shown on the attached detail drawings.
- B. Armored Edge for Concrete.** Payment at the contract unit price per linear foot is full compensation for removing specified existing materials, furnishing and installing the new armored edges, concrete and all incidental items necessary to complete the work (except the overlay material) within the specified pay limits as specified by this note and as shown on the attached detail drawings.
- C. Steel Reinforcement.** See Section 602.

The Department will consider payment as full compensation for all work required by this note and the attached detail drawings.





Remove exist bearing and Anchor Bolts flush w/ top of cap & clean bearing area

Remove exist bearing and replace with Type 2E elastomeric pad and lead shim plate. Field measure and match shim thickness to exist.

## ELEVATION AND SECTION SHOWING EXISTING BEARINGS TO BE REMOVED